

iTools



Vault

What's new **2017**

iTools Vault 2017 – Whats new

Our iTools series of smart tools constantly gets updated with new products, tools and features for you to get the most out of your CAD/PDM -system. For the 2017 version of iTools Vault (released 2016-06-01), we have focused on improvements within the following areas:

Work Folder sync	- 3
Jobserver PDF in 3D	- 5
Edit properties	- 6
Filtered View - Files	- 7
Filtered View – Items	- 8
Attach file to item	- 9
Set Property On Life Cycle Change	- 9
Jobqueue Manager	- 10
Jobserver Sync Sheet Size	- 10

Other iTools Products

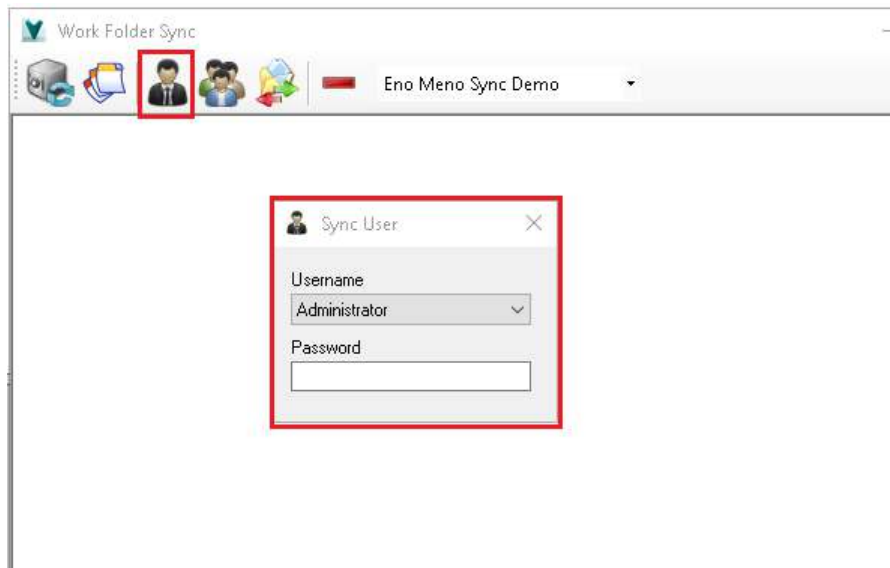


Work Folder sync

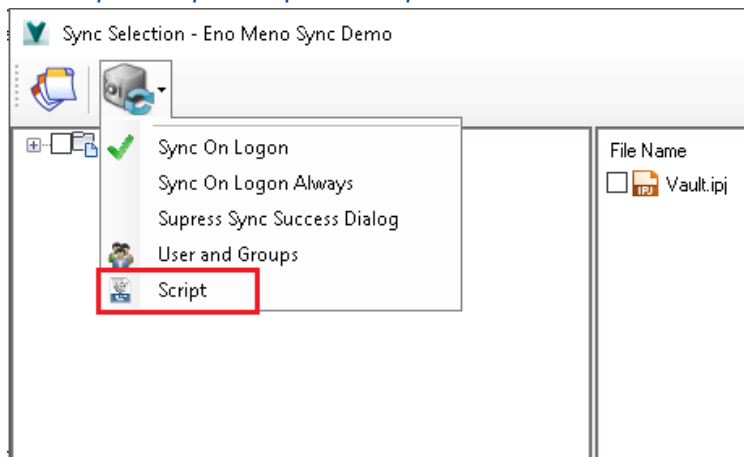
- Run pre and post script whit sync schema, can be used to move, delete files and folders. Run other scripts etc.
- Kill pre and post processes with sync schema. Can be used if one needs to secure some processes do not block files, scripts etc.
- Use same user for all sync schemas, no need for logged in user to have access to files, folders and scripts
- Associate schemas with groups, no longer needed to specify individual users
- Remove scheme via GUI

[Feature overview video](#)

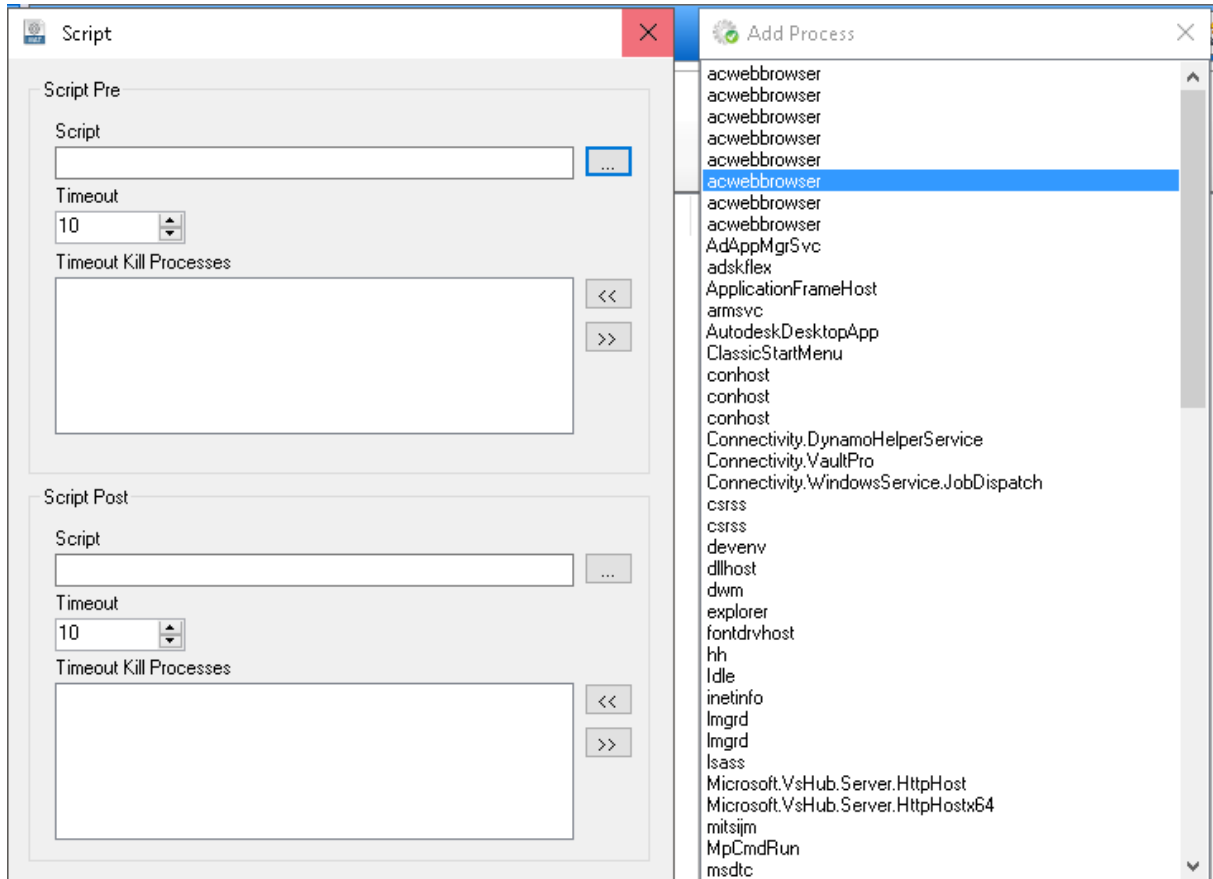
Choose one Sync User for all schema



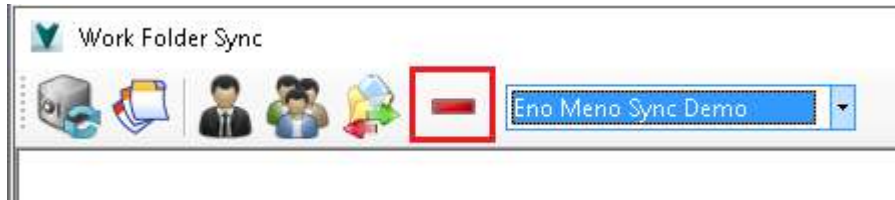
Choose pre and post script and kill processes



Choose pre and post script and kill processes



Remove schema



Jobserver PDF in 3D

- Export inventor models to 3D PDF. Many options available such as choose temple for PDF creation, what properties to include, what views etc.

[Feature overview video](#)

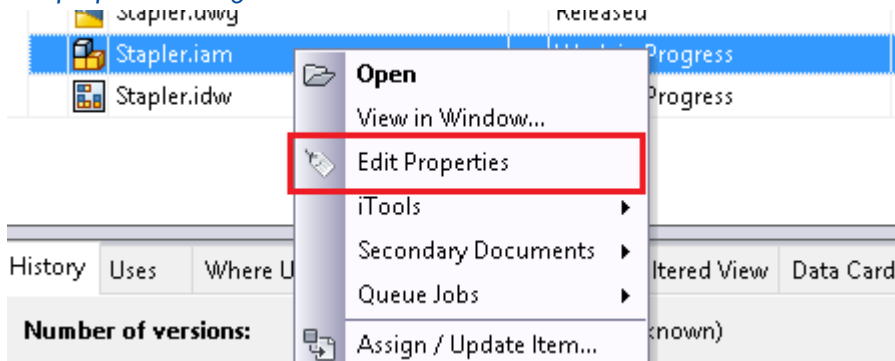
Options for 3D PDF export

PDF3D	
TargetFolder	C:\MyCentralLocation\SecondaryDocuments\AllaAlla&Lla
DuplicateFolderStructure	false
ExportAnnotations	1
ExportWokFeatures	1
LimitToEntitiesInDVRs	false
ExportTemplateIPT	
ExportTemplateIAM	
ExportTemplateIPN	
ViewPDFWhenFinished	false
GenerateAndAttachSTEPfil	true
PDFSTEPExport	
#comment	possible values: 2 (=eAP203), 4 (=eAP214IS), 5 (=eAP242)
ApplicationProtocolT	5
Author	
Authorization	
Description	
ExportFitTolerance	0.001
IncludeSketches	true
Organization	
VisualizationQuality	kHigh
ExportAllProperties	true
ExportProperties	
#comment	Summary Information, {F29F85E0-4FF9-1068-AB91-08002B27B3D9}...
ExportProperty	
Name	{F29F85E0-4FF9-1068-AB91-08002B27B3D9}:Title
ExportViews	
ExportView	
Name	Master

Edit properties

- Edit properties on right click top menu. Supports change order, custom objects, items, folder and files

Edit properties on right click



Filtered View - Files

- Validate Secondary Documents status directly in list, queue job as needed
- Better structure and integration of right click menus

[Feature overview video](#)

Validate Secondary Document state

File Name	State	Category Name	Designer	Description	Image	DWG	DXF	IGES	STEP	SAT	STP
Lower Mount.ipt		Base	Autodesk, Inc.			X					
Bottom - Back.ipt		Base	Autodesk, Inc.			X		X			
Bottom - Front.ipt		Base	Autodesk, Inc.			X					
Spring.ipt		Base	Autodesk, Inc.			X	X				X
Bottom - Anvil.ipt		Base	Autodesk, Inc.			X					
Upper - Front.ipt		Base	Autodesk, Inc.			X				X	
Upper - Back.ipt		Base	Autodesk, Inc.			X				X	
Channel - Spring Clip.ipt		Base	Autodesk, Inc.			X					
Bottom - Master.ipt		Base	B. ROEPKE			X	X				
Upper - Master.ipt		Base	Autodesk, Inc.			X					
Channel - Hinge Pin.ipt		Base	Autodesk, Inc.			X					
Staples.ipt		Base	Autodesk, Inc.			X					
Channel - Pusher.ipt		Base	Autodesk, Inc.			X				X	
Channel - Bumper.ipt		Base	Autodesk, Inc.			X				X	
Channel - Cover.ipt		Base	Autodesk, Inc.			X				X	
Channel - Base.ipt		Base	Autodesk, Inc.			X				X	

Queue jobs as needed, edit properties, collect secondary documents, open, copy and export list

File Name	State	Category Name	Designer	Description	Image	DWG	DXF	IGES	STEP	SAT	STP
Lower Mount.ipt		Base	Autodesk, Inc.			X					
Bottom - Back.ipt		Base	Autodesk, Inc.			X		X			
Bottom - Front.ipt		Base	Autodesk, Inc.			X					
Spring.ipt		Base	Autodesk, Inc.			X	X				X
Bottom - Anvil.ipt		Base	Autodesk, Inc.			X					
Upper - Front.ipt		Base	Autodesk, Inc.			X				X	
Upper - Back.ipt		Base	Autodesk, Inc.			X				X	
Channel - Spring Clip.ipt		Base	Autodesk, Inc.			X					
Bottom - Master.ipt		Base	B. ROEPKE			X	X				
Upper - Master.ipt		Base	Autodesk, Inc.			X					
Channel - Hinge Pin.ipt		Base	Autodesk, Inc.			X					
Staples.ipt		Base	Autodesk, Inc.			X					
Channel - Pusher.ipt		Base	Autodesk, Inc.			X				X	
Channel - Bumper.ipt		Base	Autodesk, Inc.			X				X	
Channel - Cover.ipt		Base	Autodesk, Inc.			X				X	
Channel - Base.ipt		Base	Autodesk, Inc.			X				X	

Filtered View – Items

- Display both BOM items and BOM Item associated files in different tabs
- Apply property-conditions on which BOM Items and BOM ITEM associated files to display
- Filter which BOM Items to display based on attached document property-conditions
- Filter what type of BOM Item associated files to include (Primary, Tertiary, Attachments etc.)
- Display Secondary Documents status for files, queue jobs, collect as needed directly from list

[Feature overview video](#)

View/manage BOM items, export list

Title (Item,CO)	State	Revision	BOMProp-Test1	BOMProp-Test2
Bottom	Work in Progress	A	Test value	2016-05-11 00:00:00
Bottom - Anvil	Work in Progress	A		
Bottom - Back	Work in Progress	A	value 2	2016-05-23 00:00:00
Bottom - Front	Work in Progress	A		
Channel	Work in Progress	A		
Channel - Spring Cl	Work in Progress	A		
Lower Mount	Work in Progress	A		
Spring	Work in Progress	A		
Upper	Work in Progress	A		
Upper - Front	Work in Progress	A		
Upper - Back	Work in Progress	A		

View/manage files associated with item and BOM items

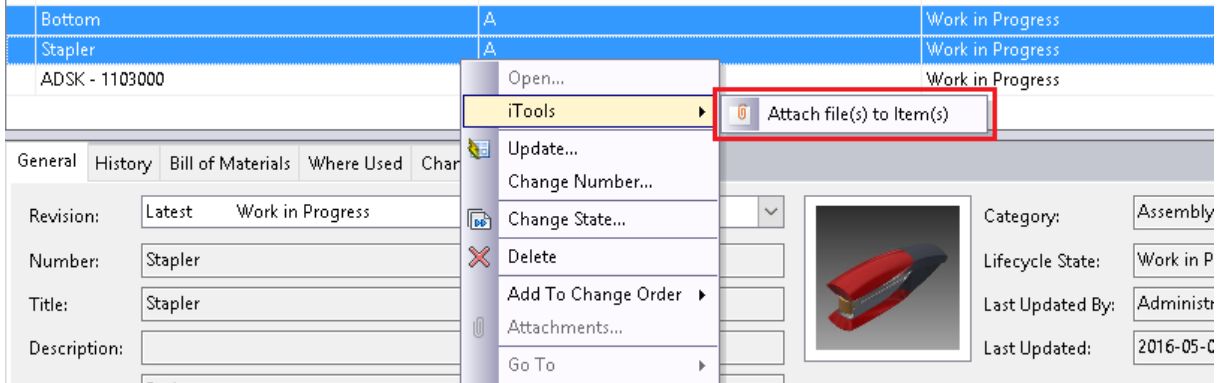
File Name	State	Category Name	DWF	DWG	IGES	3PB	SAT	STP
Bottom - Anvil.ipt		Base	X		X		X	
Bottom - Back.ipt		Base	X	X	X			
Bottom - Front.ipt		Base	X					
Lower Mount.ipt		Base	X					
Spring.ipt		Base	X	X				
Upper.ipt		Base	X					X
Upper - Front.ipt		Base					X	
Upper - Back.ipt		Base					X	
Channel - Spring Cl.ipt		Base						
Channel.ipt		Base						
Stapler.iam	Work in Progress	Engineering						
Bottom.iam		Base	X	X				
Stapler.dwg	Work in Progress	Engineering	X					
Stapler.idw	Work in Progress	Engineering	X					

Attach file[s] to item[s]

- Select one or many items and attach one or many files to them
- Block files and items from command via conditions

[Feature overview video](#)

Attach file(s) to selected item(s)



Set Property[s] On Life Cycle Change

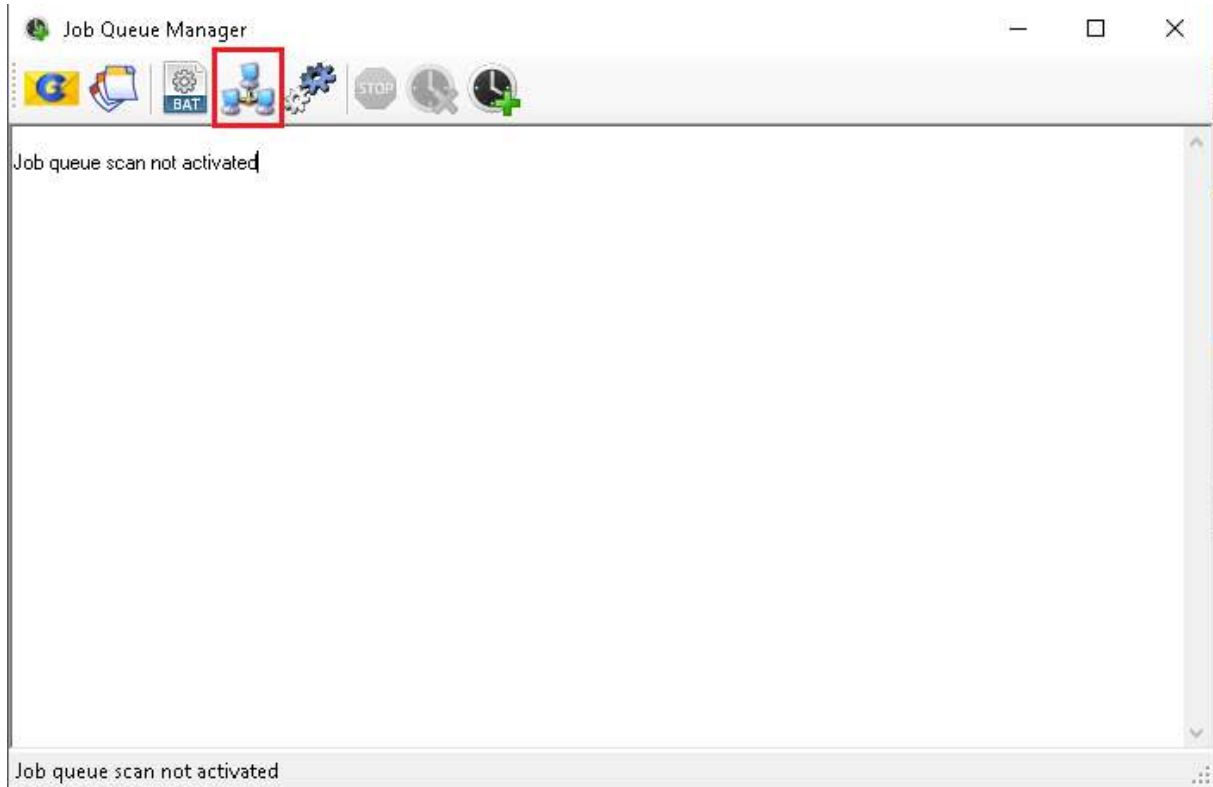
- Set property values before or after cycle change
- Specify user for set properties
- Set logged in username to property

JobqueueManager

- Route jobs, create routing schemas. Router check's if entity is present in target vault, if not no route is made. Route on demand or rout on scan/before scan

[Feature overview video](#)

Route jobs



Jobserver Sync Sheet Size

- Save inventor drawing sheet size and orientation to properties

